

PIL T H USE

Marina Information Guide



N 25° 05.250'
W 080° 26.470'

Marina Overview



WE'RE IN THE HEART OF KEY LARGO, MINUTES FROM THE BEST SPORTFISHING AND DIVING IN THE WORLD!

Our full-service marina is located on Lake Largo, a protected basin one mile from the Atlantic Ocean.

Amenities include 50 wet slips (fixed and floating), 75 dry rack storage spaces, haul out service up to 25 ft, in-slip or fuel dock pump out, water, 30/50/100 amp electric, coin-operated laundry, climate-controlled bathrooms and showers, free satellite TV, free WIFI and a captains lounge. Visit our waterfront bar and restaurant adjacent to our Natural Illuminated Aquarium for Happy Hour, Live Music and Weekly Specials.

Stop by the Ship Store / Fuel Dock for gasoline, diesel, beer, ice, snacks, beverages, bait and merchandise.



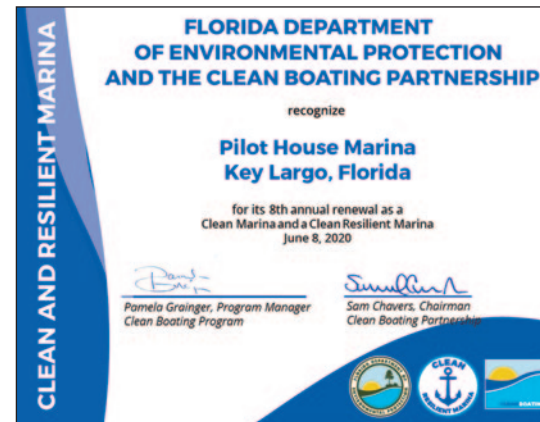
Certified Florida Clean Marina

Pilot House Restaurant & Marina is proud to be designated as a Florida Clean Marina by the Florida Department of Environmental Protection for the 8th year!

The Florida Clean Marina program encourages the provision of services such as sewage pump out stations, recycling, and proper disposal of hazardous materials to ensure a sustainable future for Florida's marine and freshwater environments.

To obtain CMP designation, facilities must follow all regulatory requirements of the Florida Department of Environmental Protection, maintain environmentally responsible business practices and implement the provided Best Management Practices. These BMPs address critical environmental issues such as sensitive habitats, waste management, stormwater control, spill prevention and emergency preparedness.

We are proud to be a marina facility that incorporates environmental Best Management Practices exceeding these regulatory requirements.



Read more about the program at <https://floridadep.gov/RCP/Clean-Marina>.

Marina Information

MARINA OFFICE

(305) 747-4359 / Phone or Text Message
dockmaster@pilothousemarina.com

MARINA HOURS

7 days - 7:00 am to 5:00 pm

FUEL DOCK HOURS

7 days - 7:00 am to 5:00 pm

HAUL-OUT HOURS

7 days - 8:00 am to 4:00 pm
(provide 24 hour notice)

**VHF RADIO
CHANNEL 16**

DOCK MASTER
Ken Bruzewski



N 25° 05.250'
W 080° 26.470'



Marina Highlights



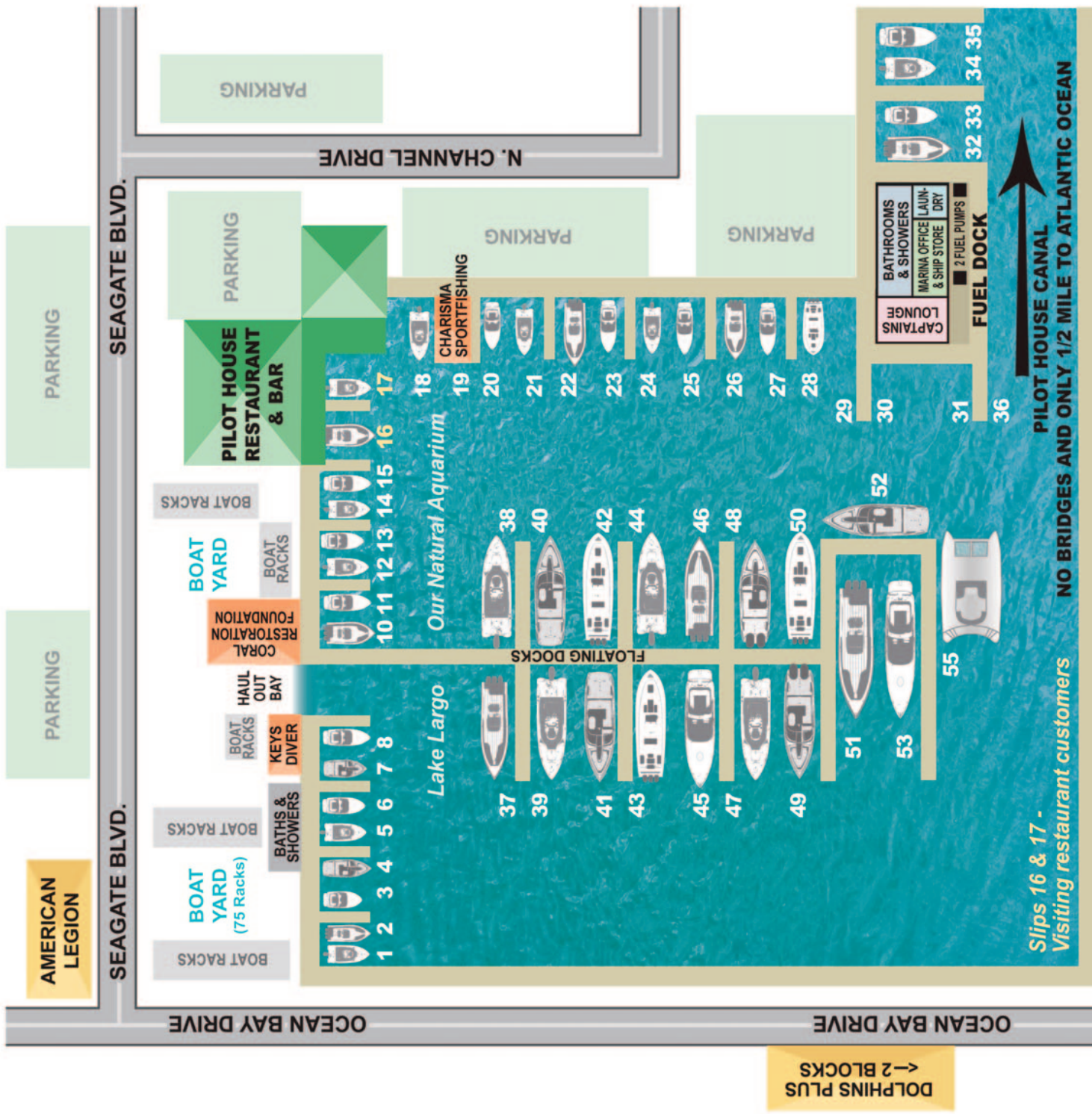
- Maximum Length: 80 ft. / high tide
- Maximum Draft: 6 ft. / high tide
- Maximum Beam: 25 ft. / high tide
- 50 Fixed and Floating Slips
- 75 Dry Storage Racks, up to 25 ft.
- Located in a Protected Basin
- Ship Store / Fuel Dock
- Haul-out Service, up to 25 ft.
- Valvtect Marine Diesel & Rec 90, Non-ethanol Gasoline
- 30/50/100 amp Electric
- Water
- Coin-operated Laundry
- Climate-controlled Showers
- Free WIFI
- Free Satellite TV
- Captains Lounge
- Pump out at Fuel Dock
- In-Slip Pump out





Pilot House Restaurant & Marina

13 Seagate Blvd • Key Largo, FL 33037



Marina Office
dockmaster@pilothousemarina.com
(305) 747-4359
N 25° 05.250' | W 080° 26.470'

Restaurant
info@pilothousemarina.com
(305) 451-3142
MM 99.6

www.PilotHouseMarina.com

Fixed & Floating Slips

ARRIVAL & DEPARTURE PROCEDURES

Please make your reservation by contacting our Dock Master by phone or email. We also ask that you provide advance notice, where feasible, of your approximate arrival time so that we can be prepared and minimize any inconvenience to you.

Upon arrival at the marina, our dock attendants will guide you in and assist you with docking. Once you are comfortably settled into your slip, we ask that you visit our marina office located at the fuel dock to check in. Our office staff will quickly register you with the marina and answer any questions that you have. Our normal business hours are 7:00 am to 5:00 pm, 7 days a week.



**VHF RADIO
CHANNEL 16**

MARINA OFFICE

(305) 747-4359 / Phone or Text Message
dockmaster@pilothousemarina.com

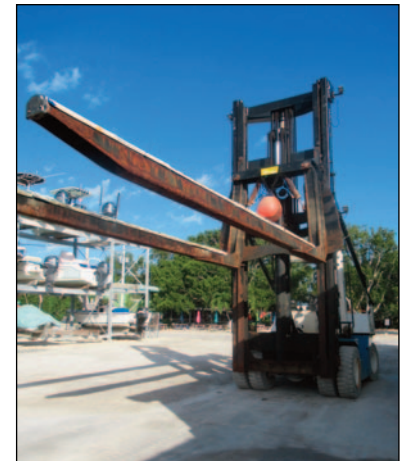


N 25° 05.250'
W 080° 26.470'

Dry Rack Storage



- Strapping or Lift Service, up to 25 ft (possibly 28 ft).
- Unlimited Haul Out Service for customers and \$8.00 per foot for non-customers.
- Rack Storage, up to 25 ft.



Fuel Dock & Ship Store

HOURS

(305) 747-4359
7 days
7:00 am to 5:00 pm



**We sell fuel specially formulated
for your marine engine.**

DIESEL

PROTECT - Contains BioGuard™ biocide to keep fuel systems free of bacteria, sludge and slime that can plug filters.

OPTIMIZE - Modern detergent technology cleans up fuel system deposits to improve fuel economy and overall performance.

EXTEND - Our proven diesel stabilizer and corrosion inhibitor protect fuel systems and stabilize fuel for two years or longer.

GASOLINE

OPTIMIZE - Patented detergent technology cleans up deposits improving fuel economy. Go further with each fill up.

ENHANCE - The entire fuel system is cleaned and maintained to maximize power, acceleration and performance.

MAINTAIN - Extra corrosion inhibitor and water dispersant helps prevent rust and controls water, lower maintenance costs.

Fuel Dock & Ship Store



RESTROOMS / SHOWERS

Climate-controlled Bathrooms
and Showers



LAUNDRY

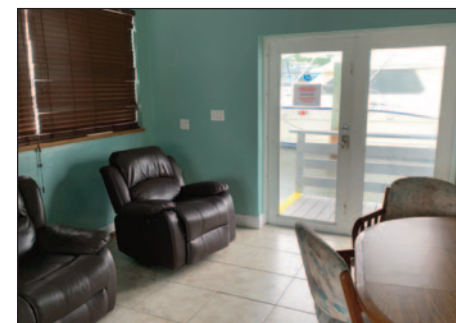
Coin-operated Laundry

ADDITIONAL SERVICES

- Disposal Service (waste oil, dry absorbents, filters)
- Pump Out Service (in-slip and at the Fuel Dock)

SHIP STORE

Sodas
Gatorade
Beer (*single can or 12-pack*)
Bottled Water (*bottle or case*)
Ice
Bait
2-cycle Oil
Pilot House Merchandise



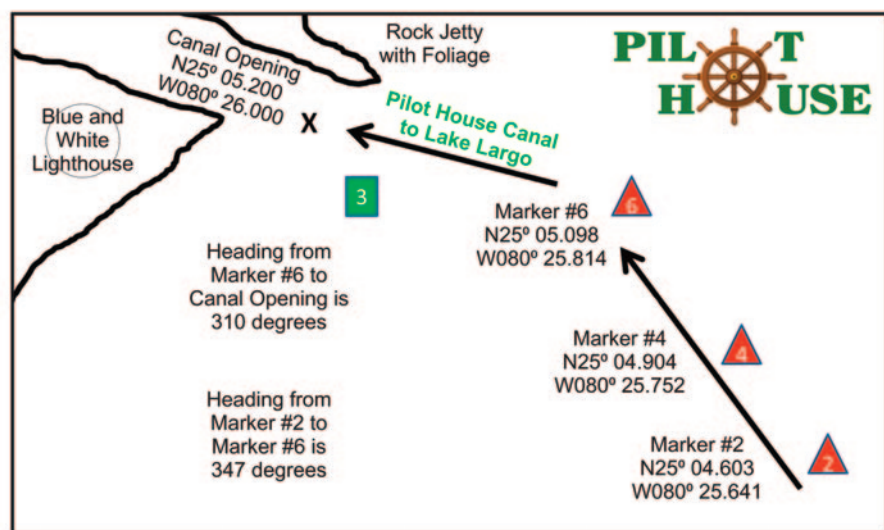
CAPTAINS LOUNGE

Marina Guests only
Air Conditioned
Comfortable seating
50" TV / Free Satellite TV
Dining Table
Microwave
Free WIFI
Book & Game Library



Marina Location

Directions from Ocean side to Pilot House Marina Canal Opening



DIRECTIONS BY SEA

1. The entrance to Pilot House Marina is located about half way between the southern entrance to Pennecamp State Park and Rodriguez Key.
2. From the ocean, follow the outer MARKER #2 ... to MARKER #4 ... to MARKER #6.
3. At MARKER #6 change heading to 310 degrees and look for the GREEN MARKER #3 leading straight into the Pilot House Canal.
4. To the starboard is a rock jetty with foliage and to port a private blue and white lighthouse. Keep to the north side of the canal about two feet off center. Depth at the entrance at low tide is four feet six inches (4'6"). Canal is .4 miles to Lake Largo.
5. Half way down the canal, on the port side, you will see about 50 yards of mangroves.
6. Keep to the port side and "hug" the mangroves for maximum draft.
7. If you're unfamiliar with Lake Largo and Pilot House Marina pull up to the fuel dock and locate one of the dock hands. Dock Master phone number is (305) 747-4359.

N25° 05.250' | W 080° 26.470'

VHF CHANNEL 16

Pilot House Restaurant & Marina
13 Seagate Blvd. (MM 99.6)
Key Largo, FL 33037
<https://pilothousemarina.com>

Marina Office
7 days, 7:00 am to 5:00 pm
dockmaster@pilothousemarina.com
(305) 747-4359

Restaurant
Call for hours
info@pilothousemarina.com
(305) 451-3142 ext. 1

This file can be downloaded from the marina page of our website.

Onsite Partners

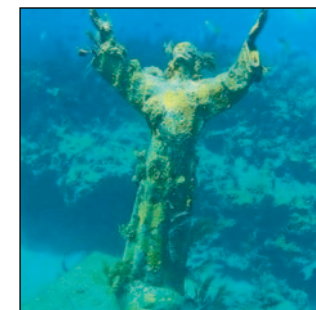
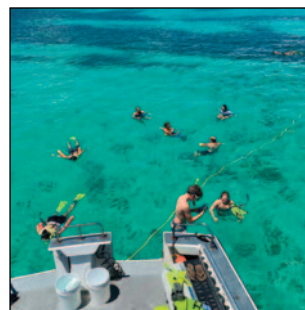
FISH

Charisma Sportfishing
(305) 522-8445
charismasportfishing@aol.com
<http://www.charismasportfishing.com/>



DIVE

Keys Diver Snorkel and Scuba Center
(305) 451-1177
info@keysdiver.com
<https://keysdiver.com/>



dockmaster@pilothousemarina.com

www.pilothousemarina.com

Pilot House Restaurant

CURRENT HOURS
Wednesday to Sunday
11:30 am to 9:00 pm

(305) 451-3142 ext. 1

info@pilothousemarina.com

Enjoy waterfront dining on Lake
Largo, a Natural Aquarium
frequently visited by Manatees!

Illuminated at night so you can
feed the fish!

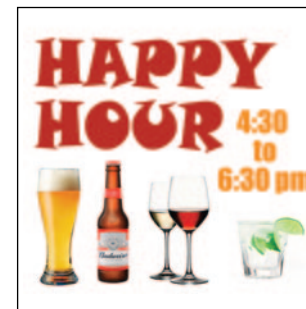


12 Cold Beers on Tap!
Wine Selection
Dine-in or Take-out
Kid's Menu

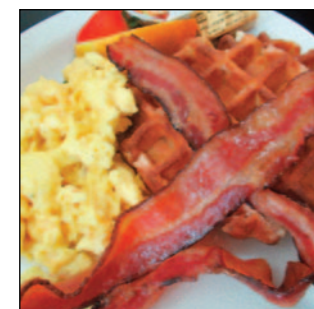
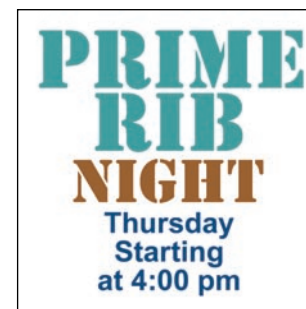
Wednesday is
Locals Day!



Pilot House Restaurant



Ask about our Weekly Specials!



info@pilothousemarina.com

www.pilothousemarina.com

PIL T H USE



N 25° 05.250'
W 080° 26.470'



Mile Marker
99.6
Oceanside

Find our listings on:

ActiveCaptain.com

Marinas.com

WaterwayGuide.com

Pilot House Restaurant & Marina
13 Seagate Blvd., Key Largo, FL 33037
www.pilothousemarina.com

MARINA: 7:00 am - 5:00 pm / 7 days
dockmaster@pilothousemarina.com
(305) 747-4359